

▶ 高性能冷室压铸机

HIGH-PERFORMANCE COLD CHAMBER
DIE CASTING MACHINE

YIZUMI 伊之密



中国驰名商标
China Famous Trademark

YIZUMI伊之密

让中国装备技术与世界同步

We Walk Alongside The World!



>> 我们的公司

广东伊之密精密机械股份有限公司是专注于“模压成型”专用机械设备的设计、研发、生产，销售及服务的高新技术企业。始创于2002年，位于中国著名的工业之都——顺德（国家级高新技术产业区），占地面积达80000平方米。以高精度注射成型机、高性能铝镁合金压铸机、高品质橡胶机为主导产品。

成立至今，伊之密凭借雄厚的资金与规模实力支持，结合业界优秀的研发、设计、制造、服务、营销团队，秉持“让中国装备技术与世界同步，并为全球客户创造更佳的投资回报及客户体验”的企业宗旨，致力成为一家经营好、管理好、文化好，让员工引以为傲，为社会仰慕及尊敬的企业。

伊之密拥有省级企业技术中心、工程中心并设立了博士后科研工作站，目前已成为中国最具竞争力和发展潜力的大型装备综合服务商、中国最具规模的装备制造企业之一、国家级高新技术企业及国家级火炬计划项目实施企业单位。2009年以来，公司持续快速增长，2009-2011年营业收入年复合增长率超过60%。

在国内，伊之密除顺德容桂生产基地外，还建有顺德五沙、苏州吴江两大生产基地，全面投产以后，伊之密每年产能将翻倍，成为业内最大厂商之一。

在全球，伊之密建有多个海外办事处和服务点，业务覆盖数十个国家和地区。2011年3月，伊之密成功收购了美国百年企业HPM公司的全部知识产权，迈出了伊之密全球化的重要一步。

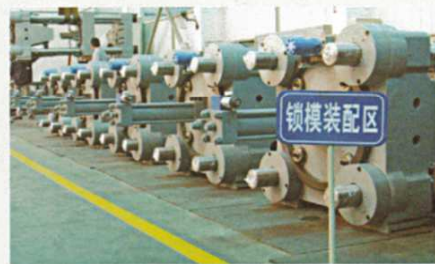
另外，伊之密计划三年内在印度、巴西、俄罗斯三个国家之一建立海外生产基地，计划2014年底投入使用，通过更多的海外生产基地为全球客户提供更好的产品和服务。



● 加工车间 Machining Workshop



● 试机中心 Machine Testing Center



● 装配车间 Assemble Workshop

ROLOP
PRENSAS HIDRAULICAS



>> Our company

Guangdong Yizumi Precision Machinery Co., Ltd is a hi-tech enterprise focusing on the design, R&D, production, sales and service of molding machines. Established in 2002, covering an area of 80,000 square meters, Yizumi is located in National Hi-tech Industrial Zone in Shunde, Foshan, which is China's famous industrial city. High precision injection molding machine, high quality die casting machine for aluminum and magnesium alloy and high performance rubber injection machine are the leading products of Yizumi.

With distinct advantages of strong financial base, and elites in R&D, manufacturing, service and sales teams, Yizumi has been committing itself to becoming an honorable corporation with healthy development, excellent management and harmonious culture. "We endeavor to facilitate Chinese machine technology keeping pace with the world and provide global clients with better investment return and customer experience" is the aim of Yizumi.

Now Yizumi is a National Hi-tech Corporation with a Provincial Enterprise Technology Center, Provincial Enterprise Engineering Center and National Postdoctoral R&D Center. We are also one of the most competitive heavy duty machine manufacturers and comprehensive service providers in China. Since 2009, Yizumi has been developing rapidly. Business revenues from 2009 to 2011 increased with a compound annual growth rate over 60%.

In China, Yizumi is building another two production bases in Wusha, Shunde District and Suzhou (near Shanghai) apart from the headquarters in Ronggui, Shunde. When they go into full operation, Yizumi will double its annual capacity and become one of the biggest machine manufacturers in China.

Currently Yizumi has a number of overseas offices and service centers, with business spreading over dozens of countries and regions. In March 2011, Yizumi successfully purchased the entire intellectual property of HPM, a hundred-year-old corporation in U.S.A, which was a milestone in the development of Yizumi's globalization.

In the next three years, Yizumi is going to set up an overseas plant in one of the following three countries: India, Brazil or Poland and put it into operation by the end of 2014. With more overseas plants, Yizumi will provide better products and service for customers worldwide.

>> 国内外知名的专业研发团队 • Professional and Experienced R&D Team

专业的技术、专注的精神，中国最出色的压铸机研发团队之一，曾经研发制造了全系列中国最大的重型冷室压铸机、中国最早的全系列高性能镁合金压铸机、全系列出口型欧洲标准和北美标准的高性能压铸机，主持研制了中国最先进的实时控制压铸机，拥有丰富的设计和制造经验。

Yizumi R&D team composes of many of professional, dedicated, experienced and China's most capable technical elites. This team participated in R&D and manufacturing of China's biggest heavy duty cold chamber die casting machines, China's earliest magnesium alloy die casting machines, China's most advanced real-time control die casting machines and high performance die casting machines conformed to European and North America standards.

>> 世界领先的制造加工技术 • World's Leading Manufacturing Facilities

日本TOSHIBA加工中心、欧洲道斯TOS重型精密加工中心、日本MORI SEIKI等一批世界先进的精密加工中心机群可以满足精密加工需求，使精度达到 μ 级（0.001mm），最大可满足加工制造4500T压铸机；

Yizumi has imported a variety of advanced precise machining centers, such as MORI SEIKI, TOS and TOSHIBA, which ensure production precision. The precision can reach 0.001mm class. Those precise machining centers can meet the need of producing 4500 tonnage die casting machine.

>> 科学的生产管理模式 • Scientific Production Management Method

标准的现代化车间、5S管理模式、科学的工艺流程，荣获广东省装备制造业50家重点骨干企业之一，粤港关键领域突破项目实施单位，博士后科研工作站；

With standard modernized workshop, 5S management mode and scientific processing procedure, Yizumi is one of Guangdong Top 50 Machine Manufacturers, an enterprise carried out "Guangdong Hongkong Essential Area Innovation Project" and an enterprise with a national postdoctoral R & D center.

>> 国际标准的检验测试 • International Quality Control Standards

全程控制的技术条件，严格依照国家级标准和行业标准。实施进料铸件检验GB/T6414-86标准、铸件加工GB/11350-89标准、线性尺寸GB/T1804-92标准和热轧钢件GB704-88标准，特殊与关键技术指标按照欧洲最先进的检测方式和企业内控高标准精心控制，确保压铸机拥有高性能和可靠性；

Every step's quality control is strictly compliant with national standards and industrial standards to ensure the high performance and high reliability of die casting machine, for example, GB/T6414-86 national standard for incoming casting parts, GB/11350-89 national standard for casting parts machining, GB/T1804-92 national standard for linear dimension and GB704-88 national standard for hot rolled steel parts. Special and essential technologies conformed to European's most advanced quality control standard and Yizumi internal standard.

>> 品质认证和客户的支持与信赖 • Certificates

公司通过了ISO9000/ISO14000国际质量保证体系认证和计量体系认证，获得广东省首批国家级高新技术企业，广东省名牌产品，广东省著名商标，全部型号产品通过欧洲CE标准认证，满足国内外客户对高品质装备的需求；

Yizumi has been granted the title of "National Hi-tech Corporation", "Guangdong Famous Product" and "Guangdong Famous Brand". We have gained ISO9001 & ISO14001 certificate and CE certificate, which can meet the demands of high quality equipments from domestic and overseas customers.

伊之密汇聚着大批有着丰富实践经验的压铸机研发制造及技术服务精英团队。这支专业、高效、团结、奋进的团队人才辈出、齐心协力，在广阔的发展舞台上激情挥舞。高素质的人才，融合高智慧的技术，以及多年来客户持久的信赖，伊之密人更加富有激情，更有信心为梦想而奋斗。“制造中国最好的压铸机，让中国装备技术与世界同步”，卓越的伊之密在发展的道路上正大步向前迈进……

Yizumi R&D and service team composes of numbers of technical elites with rich experience in die casting industry. Professional, efficient, united and aspirant, this team is given full play to its potentials. With its talent and advanced technology, Yizumi is striving for manufacturing the best die casting machines in China and walking alongside the world.



让客户享受“金钻”级服务，持久信赖伊之密品牌！ Yizumi Provides Carefree “Diamond Service” To Customers!

及时性：精心的布局和构建密集的服务网络，确保及时地为客户提供专业的服务；

有效性：专家级技术团队满足客户高质量的服务需求；

高素质：公司对服务人员进行礼仪、专业理论及专业技能等方面的培训，通过严格的考核和选拔任用；

全方位：伊之密构建“金钻”级之“全程无忧”服务，为您提供专业的售前、售中、售后之投资规划、机台选型、压铸厂房规划设计、压铸机安装调试、技术人员及操作人员培训、生产工艺问题解决等服务，帮助您提高生产效率、降低成本，最终增强您的市场竞争力。

Prompt: Yizumi has set up a wide service network to provide customers with prompt and professional services;

Efficient: Experienced service team satisfied the strict demands of customers;

Professional: Yizumi provides training to its service people in terms of protocols, theories and skills. Only qualified people can assume quality services to customers.

Comprehensive: Yizumi provides carefree “Diamond Service” to customers. Such services include investment budget, machine selection, workshop planning, machine installation and commissioning, technician and operator training and troubleshooting during presales, sales and after-sales. It can help customers improve production efficiency, lower cost, and enhance market competitiveness

接近终生无故障的高可靠性压射系统

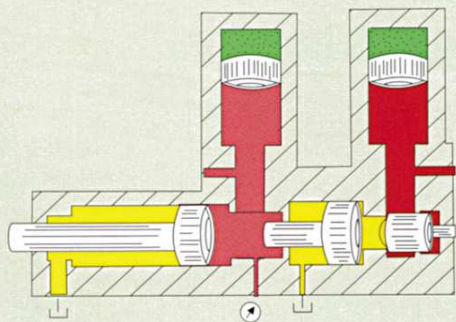
[改进型NFP技术]

Trouble-free Highly Reliable Injection System

Advanced No Floating Piston Technology

技术一 >>

1



- >> 压射系统集成简约，无浮动活塞设计结构，核心部位接近终身无故障；
- >> Integrated injection system, no floating piston design, trouble-free core parts.

- >> 压射性能优越：最大空压射速度 $\geq 8\text{m/s}$ ，增压建压时间 $\leq 15\text{ms}$ ，速度慢转快时间大幅缩短；
- >> Excellent performance of injection system: Maximum air injection speed $\geq 8\text{ m/s}$; Pressure building time $\leq 15\text{ms}$; Switching time from slow speed to high speed is shortened obviously.

- >> 无浮动活塞结构设计的压射系统具有结构简单、可靠耐用、控制灵敏等特点，对压射系统核心无干涉；
- >> NFP Injection system with the advantages of simple structure, high reliability and durability, accurate control and non-interference with injection system.

- >> 两种增压触发方式：压力触发和位置触发，满足各种工艺要求的自由选择。
- >> There are two intensification activation ways-pressure and position that satisfy all kinds of processing requirements.

两种增压触发方式
Two Activation Ways

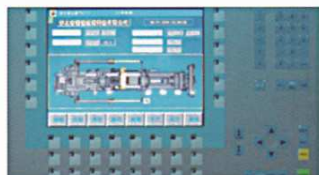
智能型在线品质监控系统

[高精度PPS曲线+智能品质抽检技术]

Intelligent Online Quality Control System

Position, Pressure & Speed Curve Display And Intelligent QC Technology

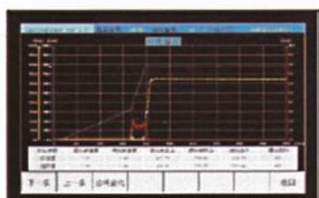
技术二 >>



>> 为客户解决产品品质不稳定的烦恼，有效降低客户在大量质检工作中所投入的人力物力成本，通过曲线自适应直观的监控压铸机压射系统工作状态，从而保证优质产品的重复性；

>> 在压射过程中，压射曲线被自动记录并智能比对，出现异常，及时报警报检，确保大批量产品品质的一致性和稳定性，彻底避免因压铸机工作状态出现变化而产生的大批量次品现象；

>> 在一个批量的生产过程中，通过压射数据分析和在线对比，依据质量统计学模式，提高质检人员的抽检分析能力与准确性，确保批号产品的一致性。



>> Real-time display device can monitor product quality and ensure steady product quality and repeatability to lower the cost of quality control.

>> The injection curves were recorded and compared automatically during injection. Alarm for abnormal cases, which ensures consistency and stability of the product quality. It can avoid a large number of defective products when the working condition of die casting machine changes.

>> During the production of a batch of products, we control products consistency by analysing and online comparing injection data that improving the quality control ability basing on statistical method.



曲线查询功能

>> 高精度压射曲线实时显示：可以实现曲线的缩放、平移、测量、查询功能，便于工艺人员对所关注的区段进行细致入微的观察和分析；

>> 动态压射参数显示功能：显示并更新最新的10个压铸件的工艺参数；样品曲线打印输出功能；

>> 标准曲线设定和对比显示功能：清晰的指明压射工艺参数的调整方向，操作工人无需特殊技能即可迅速将压铸机的压射参数调整至生产该产品的最佳状态。

>> Real time display of precise injection curve: it has zoom, translation, measure and checking functions, which can help technicians carrying out meticulous observation and analysing on the particular section of the curve.

>> Dynamic injection data display function: show data of the latest 10 die casting products parameter; Sample curve printing function.

>> Standard curve setting and comparing display function: It can indicate the injection data adjustment clearly. The operators without special skills can adjust the injection data to the best setting for production.

动态压射参数列表显示功能

显示屏	Screen	高分辨率TFT真彩触摸屏	High resolution, TFT true color touch screen
存储介质	Storage media	SD 卡存储器	SD memory card
曲线存储数量	Curve storing quantity	2,000-20,000	2,000-20,000
采样时间间隔	Interval of sampling	≤1毫秒	≤1ms
模具管理能力	Mould parameters storage	1000组	1000 sets
工艺特征值	Processing data	慢压射速度、快压射速度、快压射起始位置、压射终止位置、增压压力、建压时间	Slow injection speed / Fast injection speed / The start position of fast speed / The end position of injection / Intensification pressure/Pressure building time

高可靠性柱架系统

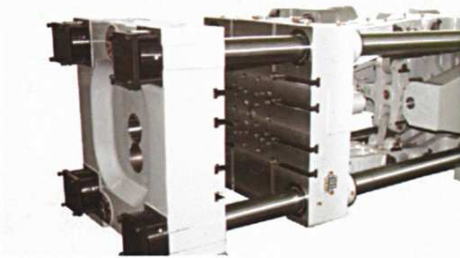
[耐磨高效锁模DDC技术]

Highly Reliable Clamping System

Differential Die Close Technology

技术三 >>

3



- >> 按照高速机要求的高刚性开锁模机构，耐冲击、寿命长；
- >> 特快锁模技术，较传统压铸机可靠性大幅提高，实现高速生产，班产量提高15%以上；
- >> High rigidity clamping system contents with high speed machine. It is impact-resistant and has long service life.
- >> Fast clamping technology greatly improves product reliability and productivity comparing with traditional die casting machine.



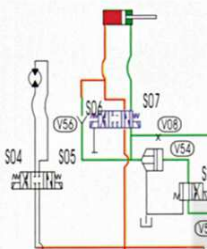
- >> 优质球墨铸铁模板，良好的刚性与耐磨性，采用有限元分析技术校核设计，应力分布合理，合模精度高；
- >> High quality, high rigidity and wear resistant casting platen adopts finite element analysis design that brings even stress distribution, little distortion and precise mould clamping.



- >> 模板加工，一次定位，全面加工，保证高精度要求；曲轴等连接部件，组套加工，最优化保证配合精度；
- >> One time positioning of platen and toggle parts during machining processing ensures high precision.



- >> 科学的液氮安装工艺，保证配合精度，延长寿命；
- >> Liquid nitrogen super low temperature installation method ensures precision and prolongs service life of toggle parts.



- >> DDC差动合模原理，快速锁模，快速储能，有效缩短生产周期。
- >> DDC differential clamping system, fast die close, fast charging of accumulator that shorten production cycle efficiently.

低能耗高效率无干扰的变频控制技术

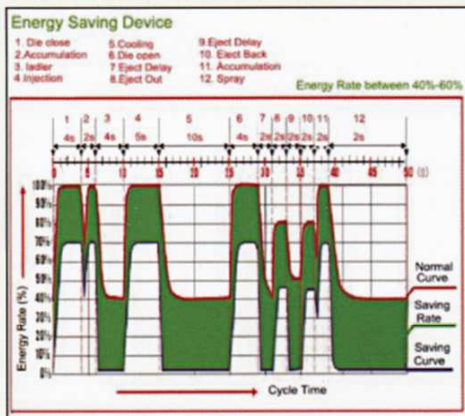
[高效节能HES技术]

Low Energy Consumption, Frequency Conversion Control System

High Energy Saving Technology

技术四 >>

4



>> 采用世界先进的无感矢量闭环转矩控制技术和双DSP专用能效系统中央处理器，配合压铸机专用程序软件，实现高效节能降耗的伊之密HES技术；

>> Yizumi HES technology adopted world-leading closed-loop control technology, dual DSP specific CPU system and special software of die casting machine to achieve high efficiency and energy-saving.

>> HES技术特点

- 高效节能45%~60%
- 与压射系统和控制系统无干扰现象
- 不会加大液压油泵的损耗
- 有效降低油温约8℃以上

>> Advantages of HES technology

- Energy-saving by 45%-60%
- Non interference with injection system and control system
- No extra wear to hydraulic pumps
- Lower oil temperature by about 8℃



>> 伊之密高效节能HES技术已经广泛应用于各种型号的压铸机，经实际生产检测证实，节能效果显著；

>> 以DM800为例，按照70%的开机率，一年约可以节省45000度电！

>> Yizumi HES technology has been widely applied to various models of die casting machines. The obvious energy-saving effect was testified by production.

>> Take DM800 as an example, it can save over 45000kWh, assuming 70% working time.

DM标准系列卧式冷室压铸机DM140~DM900

DM Standard Series Cold Chamber Die Casting Machine DM140~DM900



>> DM标准系列卧式冷室压铸机DM140~DM900特点 DM Standard Series DM140~DM900 Features:



机铰部分采用中央电动润滑系统，定时定量润滑机铰提高使用寿命。

Central electrical lubrication system for regular lubricating prolongs toggle system service life.



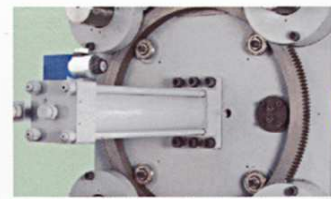
采用进口名牌高性能、低噪音的高低压双联泵。

Imported high and low pressure dual-pump control system with high performance and low noises.



采用进口电子尺，开、合横行程控制精确。

Imported lineal transducer for accurate stroke control of die open and die close.



液压马达泵驱动齿轮调节模具厚度装置，操作方便，调节模厚度精确。

Hydraulic driven gear-type mould height adjusting device with convenient operation and accurate adjustment.

>> 主机性能特点:

- 高性能: 最大空压射速度 $\geq 8\text{m/s}$, 增压建压时间 $\leq 15\text{ms}$
- 电比例控制系统压力和流量, 具备多级压力和速度控制以及低压合模保护功能
- 压射速度和压力分四级控制, 独立的快速及增压储能器, 位置和压力两种增压触发方式
- 高强度铸造模板, 高拉力合金钢导柱, 外层电镀耐磨硬铬
- 西门子PLC控制系统, 触摸屏操作, 工作平稳快捷、安全可靠, 控制精度高, 具备生产管理, 故障诊断及50组模具参数存储等功能
- 液压驱动调节容模厚度结构
- 可靠耐用的欧日名牌电器及液压元件
- 中央电动润滑系统
- 快速液压顶出及抽芯装置
- 威格士/东京机器省电低噪音高低压双联泵
- 开合模行程电调控制
- 特快锁模技术, 快速储能系统, 有效缩短生产周期
- 压射系统采用欧式拉杆结构, 中心及偏心多位置压射选择, 方便调节, 精度高, 适用于多品种复杂的模具

>> Main Features :

- High performance: Maximum air injection speed $\geq 8\text{ m/s}$; Pressure building time $\leq 15\text{ms}$.
- Electrical proportional control of system pressure and flow, with multi-stage pressure and speed control, and low-pressure die close protection function;
- Four stages control of injection speed and pressure, independent high-speed and intensification injection accumulators, and two intensification activation ways, namely, position and pressure.
- High rigidity platen, high tensile alloy steel hard chrom plated tie bar.
- Siemens PLC control system (with touch screen) with fast, stable, safe and reliable operation, high precision, and functions such as production management, trouble diagnosis, and 50 sets mould parameters storage.
- Hydraulic driven gear-type mould height adjusting mechanism.
- Reliable and durable electrical and hydraulic components of world famous brand.
- Central electrical lubrication system, independent grease lubrication mould height adjusting mechanism.
- High speed hydraulic ejection and core-pulling devices
- Electricity-saving, high and low pressure dual-pump system(Vickers / TKS)
- Die close and die open stroke with proportional control
- DDC system, fast accumulation, shorten production cycle efficiently.
- Injection system adopted European standard design with multi injection position easy adjustment and high precision, suitable for all kinds of mould.



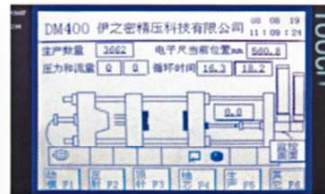
采用有限元分析校核之模板, 应力分布合理, 变形小, 合模精度高。

Finite element analysis platen, with rational stress distribution, little distortion and precise die close.



电比例控制系统压力和流量, 具备多级压力和速度控制以及低压合模保护能力。

Electrical proportional control of system pressure and flow, with multi-stage pressure and speed control, and low-pressure die close protection function.



标准型压铸机采用德国西门子PLC控制系统, 保证工作平稳、快捷、安全可靠, 控制精度高。

Siemens PLC control system ensures fast, stable, safe and reliable operation.



压射系统NFP技术结构设计, 高可靠性, 终生保障, 满足各种高精密压铸件生产要求。

Injection system adopts no floating piston (NFP) design, with high reliability, which can satisfy with demands of producing various high precision die casting parts.

DM140-DM900 标准系列配置表

DM140-DM900 Standard Features and Optional Features

配置项目	ITEMS	DM140	DM180	DM300	DM400	DM500	DM650	DM800	DM900
>> 主机主题 / General									
伊之密墨灰色	Gray black	●	●	●	●	●	●	●	●
象牙白色/指定颜色	Ivory white / Others	○	○	○	○	○	○	○	○
手动安全门(前、后)	Manual safety door (front, back)	●	●	●	●	●	●	—	—
气动安全门(前)	Pneumatic safety door (front)	○	○	○	○	○	○	●	●
电动落地安全门(前)	Electrical safety door (front)	—	○	○	○	○	○	○	○
>> 电气控制 / Electrical System									
西门子PLC	Siemens PLC	●	●	●	●	●	●	●	●
欧姆龙PLC	Omron PLC	○	○	○	○	○	○	○	○
5.7寸高分辨率触摸屏	5.7" touch screen	●	●	●	●	●	●	●	●
10寸高分辨率触摸屏	10" touch screen	—	○	○	○	○	○	○	○
电箱风扇	Exhaust fan	●	●	●	●	●	●	●	●
电箱空调	Air conditioner	○	○	○	○	○	○	○	○
模具存储50组	50 sets mould parameters storage	●	●	●	●	●	●	●	●
扩展模具存储	Extended mould parameters storage	○	○	○	○	○	○	○	○
电子式锁模力显示	Electrical locking force display	○	○	○	○	○	○	○	○
>> 柱架部分 / Clamping system									
双比例控制开合模	Dual proportional control of die open and close	●	●	●	●	●	●	●	●
电子尺控制行程	Lineal transducer for position control	●	●	●	●	●	●	●	●
特快锁模系统	DDC system	—	—	●	●	●	●	●	●
手动调模	Manual die height adjustment	●	●	●	●	●	●	●	●
自动调模	Auto die height adjustment	○	○	○	○	○	○	○	○
机械式抽杠(1根)	Mechanical tie bar extraction (1pc)	—	○	○	●	●	●	●	●
液压抽杠(1根)	Hydraulic tie bar extraction (1 pc)	○	○	○	○	○	○	○	○
>> 液压系统 / Hydraulic System									
威格士双联叶片泵/东京机器油泵	Vickers / TKS pump	●	●	●	●	●	●	●	●
>> 抽芯和顶针 / Core and Ejector									
双比例控制	Dual proportional control	●	●	●	●	●	●	●	●
动模1组	1 set on moving platen	○	●	●	—	—	—	—	—
动模2组	2 sets on moving platen	○	○	○	●	●	●	●	●
定模1组	1 set on fixed platen	○	○	○	○	—	—	—	—
定模2组	2 sets on fixed platen	○	○	○	○	●	●	●	●
抽芯局部加压	Partial pressure building for core-pulling	○	○	○	○	○	○	○	○
顶针双比例控制	Dual proportional control of ejecting	●	●	●	●	●	●	●	●
顶针行程开关控制	Ejecting stroke control	●	●	●	●	●	●	●	●
>> 压射部分 / Injection System									
机械式精密手轮调节控制	Mechanical hand wheel control	●	●	●	●	●	●	●	●
电比例调节控制	Electrical proportional control	○	○	○	○	○	○	○	○
接近开关控制行程	Proximity switch for stroke control	●	●	●	●	●	●	●	●
电子式控制行程	Electrical stroke control	○	○	○	○	○	○	○	○
智能在线品管PPS技术	Intelligent online PPS technology	○	○	○	○	○	○	○	○
>> 其他 / Others									
油温表	Oil temperature indicator	●	●	●	●	●	●	●	●
电子式油温报警	Electrical oil temperature alarm	○	○	○	○	○	○	○	○
锤头润滑装置	Plunger lubrication system	○	○	○	○	○	○	○	○

标准配置“●”和可选配置“○”

DM 标准系列参数表 (DM140-DM900)

DM140-DM900 Specification

项目	ITEMS	单位	DM140	DM180	DM300	DM400	DM500	DM650	DM800	DM900
合型力	Locking Force	kN	1400	1800	3000	4000	5000	6500	8000	9000
合模行程	Locking Stroke	mm	350	380	460	550	580	670	760	760
模具厚度 (最小-最大)	Die Height(Min.-Max.)	mm	200-500	200-600	250-700	300-750	350-850	350-900	400-950	400-950
模板尺寸 (水平x垂直)	Platen Size(HXV)	mm	650X650	710x710	870x870	1000x1000	1150x1150	1280x1280	1420x1420	1470x1470
导柱内距	Space Between Tie Bars	mm	430X430	480x480	570x570	650x650	750x750	850x850	930x930	960x960
导柱直径	Tie Bar Diameter	mm	80	85	110	130	140	160	180	190
压射力	Injection Force	kN	200	280	320	370	450	540	645	700
压射行程	Injection Stroke	mm	320	350	410	510	580	650	760	760
压射头直径	Plunger Diameter	mm	40,50	50,60	50,60,70	60,70,80	70,80,90	70,80,90	80,90,100	80,90,100
射料量 (镁)	Injection Weight(Mg)	kg	0.5,0.8	0.9,1.3	1.0, 1.5,2.0	1.9, 2.6,3.4	2.9, 3.8,4.9	3.3, 4.4,5.5	5.1, 6.4,7.9	5.1, 6.4,7.9
射料量 (铝)	Injection Weight(Al)	kg	0.7,1.1	1.2,1.8	1.5,2.1,2.9	2.7,3.6,4.8	4.1,5.4,6.9	4.6,6.1,7.7	7.1,9,11.1	7.1,9,11.1
铸造压力 (增压)	Casting Pressure(intensifg.)	MPa	159,101	142,99	163,113,83	130,96,73	116,89,70	140,107,84	128,101,82	139,110,89
铸造面积	Casting Area	cm ²	87,137	125,180	182,263,357	305,412,540	427,555,704	460,601,764	620,784,963	645,815,1010
最大铸造面积 (40MPa)	Max. Casting Area (40MPa)	cm ²	350	450	750	1000	1250	1625	2000	2250
压射位置	Injection Position	mm	0,-100	0,-100	0,-125	0,-175	0,-220	0,-250	0,-250	0,-250
压射头推出距离	Plunger Penetration	mm	120	130	155	210	250	280	300	300
压射室法兰直径	Casting Flange Diameter	mm	110	110	120	130	150	165	200	200
压射室法兰凸出定板高度	Casting Flange Protrusion	mm	10	10	15	15	15	15	20	20
顶出力	Ejector Force	kN	90	105	150	180	240	300	360	360
顶出行程	Ejecting Stroke	mm	80	90	110	130	140	150	180	180
电机功率	Motor Capacity	kW	15	15	22	22	37	37	45	45
系统工作压力	System Working Pressure	MPa	14	14	16	16	16	16	16	16
油箱容量	Oil Tank Capacity	L	400	500	600	800	1000	1000	1200	1500
机器吊装参考重量	Referential Machine Weight For Uplifting	kg	5500	6400	11000	15000	25000	31000	40000	50000
外形尺寸 (长X宽X高)	Machine Dimensions(LXWXH)	mm	5200x1250x2200	5600x1500x2700	6200x1720x2750	6900x1920x2880	7600x2150x2980	7950x2280x3100	9000x2420x3220	9200x2450x3250

■ 说明: 本公司保留对样本中描述产品进行改进的权利, 规格如有变更, 恕不另行通知。样本中的产品照片仅供参考, 产品以实物为准。
 Remark: We reserve the right to make any product improvement or specification changes without prior notice. And product photos shown in catalogue are for reference only.

DM重型机系列卧式冷室压铸机DM1000~DM3000

DM Heavy Duty Series Cold Chamber Die Casting Machine DM1000~DM3000



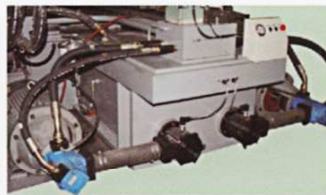
>> DM重型机系列卧式冷室压铸机DM1000~DM3000特点

DM Heavy Duty Series DM1000~DM3000 Features:



机铰部分采用中央电动双润滑系统，独立黄油润滑调模机构

Central electrical dual lubrication system, independent grease lubricates mould height adjusting mechanism.



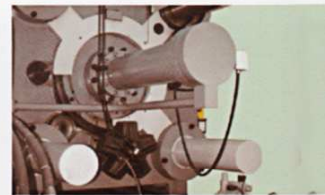
采用两组进口威格士高性能，低噪音的高低压双联泵

Two sets imported Vickers high and low pressure dual-pump control system with high performance and low noises



采用进口电子尺，开合模行程控制精确稳定，合模DDC技术，高速度，高效率

Imported lineal transducer for accurate stroke control of die open and close. DDC technology with high speed and high efficiency.



双液压马达驱动齿轮调节模具厚度装置，操作方便，调节准确；调模通畅技术，低压畅通调模技术

Dual hydraulic driven gear-type mould height adjusting mechanism with convenient operation and accurate adjustment TC and low pressure mould height adjustment technology

>> 主机性能特点:

- 压射控制技术, 电比例控制压射系统, 精稳可靠, 压射速度和压力分四级控制, 独立的快速及增压储能器, 位置和压力两种增压触发方式
- 电比例控制系统压力和流量, 具备多级压力和速度控制以及低压合模保护功能
- 高精度压射曲线显示PPS技术, 智能在线品质监控系统, 智能报检提示, 产品异常报警
- 操作侧上方配有液压抽杠装置, 安全快捷方便地更换大型模具, 高拉力合金钢导柱, 外层电镀耐磨硬铬, 高强度铸造模板
- 改进型调模通畅技术, 液压驱动调节容模厚度装置, 改进型专利技术, 较低压力下, 仍可以调模顺畅
- 西门子PLC控制系统, 10寸彩色显示屏操作, 工作平稳快捷、安全可靠, 控制精度高, 具备生产管理, 故障诊断及100组模具参数存储等功能
- 可靠耐用的派克、力士乐、威格士、油研液压元件及名牌电器
- 中央电动双润滑机铰润滑系统, 独立黄油润滑调模系统
- 抽芯双液锁功能, 多组抽芯装置, 快速液压顶出装置
- 锁模DDC技术, 特快锁模系统, 快速储能系统, 有效缩短生产周期, 提高生产率
- 采用欧洲拉杆连接结构, 中心及偏心多个压射位选择, 方便调节, 精度高, 适用于多品种较复杂的模具
- 压铸单元岛设计理念, 预留多种智能先进的周边设备接口和软件配套

>> Main Features :

- Injection control technology and electrical proportional control of injection system with high precision and high reliability; Four stages control of injection speed and pressure, independent high-speed and intensification injection accumulators, and two intensification activation ways, namely, position and pressure.
- Electrical proportional control of system pressure and flow, with multi-stage pressure and speed control, and low-pressure die clamping protection function.
- Precise injection curve display PPS technology and intelligent quality control system with defective product alarm
- Hydraulic tie bar extraction device fixed on the upside of operation panel enables customer to change large mold easier, faster and more convenient;
- Improved mold adjusting TC technology ensures mold adjustment under low pressure.
- Siemens PLC control system (10" color touch screen) with fast, stable, save and reliable operation, high precision, and functions such as production management, trouble diagnosis, and 100 sets mold parameter storage.
- Reliable and durable electrical and hydraulic components of famous brand (Parker / Rexroth / Vickers / Yuken)
- Central electric dual lubrication system, independent Albany grease lubrication mold adjusting structure
- Dual hydraulic locking for core-pulling, multi-sets core-pulling devices, high speed hydraulic ejection devices
- Mold clamping DDC technology, fast clamping system, fast energy-storing system, shorten production cycle efficiently.
- Injection system adopted European bar-type design with multi injection position, easy adjustment and high precision, suitable for all kinds of mold.
- Injection unit island design, extra interfaces with advanced control software for auxiliary equipments.



采用有限元分析校核之模板, 应力分布合理, 变形小, 合模精度高

Finite element analysis gearing, with rational stress distribution, little distortion and precise die close and open



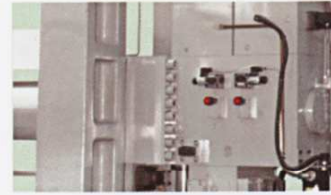
电比例控制系统压力和流量, 具备多级压力和速度控制, 以及低压合模保护功能

Electrical proportional control of system pressure and flow, with multi-stage pressure and speed control, and low-pressure die close protection function



采用德国西门子PLC控制系统, 10寸彩色TFT显示屏, 标靶曲线PPS技术, 智能检测产品质量

Siemens PLC control system with 10" TFT true color display screen, adopted PPS curve technology to control product quality.



精密高响应德国Parker阀, 全电脑调节压射工艺参数, 比例控制压射压力和流量

High response and precise German imported Parker valve, injection parameters adjusted by PLC, and proportional control of injection pressure and flow.

DM1000-DM3000 重型机系列配置表

DM1000-DM3000 Standard Features and Optional Features

配置项目	ITEMS	DM1000	DM1250	DM1650	DM2000	DM2500	DM3000
>> 主机主题 / General							
伊之密墨灰色	Gray black	●	●	●	●	●	●
象牙白色/指定颜色	Ivory white / Others	○	○	○	○	○	○
电动落地安全门 (前)	Electrical safety door (front)	●	●	●	●	●	●
手动落地安全门 (后)	Manual safety door (back)	●	●	●	○	○	○
电动落地安全门 (后)	Electrical safety door (back)	○	○	○	●	●	●
>> 电气控制 / Electrical System							
西门子PLC	Siemens PLC	●	●	●	●	●	●
欧姆龙/其他PLC	Omron PLC / others	○	○	○	○	○	○
10寸高分辨率显示屏	10" dispaly screen	●	●	●	●	●	●
电箱风扇	Exhaust fan	●	●	●	●	●	●
电箱空调	Air conditioner	○	○	○	○	○	○
模具存储100组	100sets mould parameters storage	●	●	●	●	●	●
扩展模具存储	Extended mould parameters storage	○	○	○	○	○	○
电子式锁模力显示	Electrical locking force display	○	○	○	○	○	○
>> 柱架部分 / Clamping system							
双比例控制开合模	Dual proportional control of die open and close	●	●	●	●	●	●
电子尺控制行程	Lineal transducer for position control	●	●	●	●	●	●
双润滑+独立黄油润滑	Dual lubrication system & independent grease lubrication system	●	●	●	●	●	●
特快锁模系统	DDC system	●	●	●	●	●	●
手动调模	Manual die height adjustment	●	●	●	●	●	●
自动调模	Auto die height adjustment	○	○	○	○	○	○
液压抽杠 (前上1根)	Hydraulic tie bar extraction (1 pc)	●	●	●	●	●	●
>> 液压系统 / Hydraulic System							
威格士双联叶片泵/东京机器油泵	Vickers / TKS pump	●	●	●	●	●	●
旁路精密滤油系统	By-pass filter system	●	●	●	●	●	●
>> 抽芯和顶针 / Core and ejector							
双比例控制	Dual proportional control	●	●	●	●	●	●
抽芯双液锁	Dual hydraulic locking for core-pulling	●	●	●	●	●	●
动模2组	2 sets on moving platen	●	●	●	●	●	●
动模3组	3 sets on moving platen	○	○	○	○	○	○
定模2组	2 sets on fixed platen	●	●	●	●	●	●
定模3组	3 sets on fixed platen	○	○	○	○	○	○
抽芯局部加压	Partial pressure building for core-pulling	○	○	○	○	○	○
顶针双比例控制	Dual proportional control of ejecting	●	●	●	●	●	●
顶针行程开关控制	Ejecting stroke limit switch control	●	●	●	●	●	●
>> 压射部分 / Injection System							
智能在线品管PPS技术	Intelligent online PPS technology	●	●	●	●	●	●
电比例调节控制	Electrical proportional control	●	●	●	●	●	●
电子式控制行程	Electrical stroke control	●	●	●	●	●	●
实时控制系统	Real time control system	○	○	○	●	●	●
>> 其他 / Others							
大面积板式冷却器	Large area plate type cooler	●	●	●	●	●	●
电子式油温报警	Electrical oil temperature alarm	●	●	●	●	●	●
锤头润滑装置	Plunger lubrication system	●	●	●	●	●	●

DM 重型机系列参数表 (DM1000—DM3000)

DM 1000—DM 3000 Specification

项目	ITEMS	单位	DM1000	DM1250	DM1650	DM2000	DM2500	DM3000
合型力	Locking Force	kN	10000	12500	16500	20000	25000	30000
合模行程	Locking Stroke	mm	880	1000	1200	1400	1500	1500
模具厚度 (最小-最大)	Die Height(Min.-Max.)	mm	450-1100	450-1200	500-1400	600-1600	700-1800	850-2000
模板尺寸 (水平x垂直)	Platen Size(HXV)	mm	1620X1620	1730x1730	2000x2000	2150x2150	2350x2350	2620x2620
导柱内距	Space Between Tie Bars	mm	1030X1030	1100x1100	1180x1180	1350x1350	1500x1500	1650x1650
导柱直径	Tie Bar Diameter	mm	200	230	250	280	310	340
压射力	Injection Force	kN	805	1100	1260	1510	2000	1950
压射行程	Injection Stroke	mm	850	910	970	1050	1100	1150
锤头直径	Plunger Diameter	mm	90,100,110,120	100-140	110-150	120-160	140-180	140-180
射料量 (镁)	Injection Weight(Mg)	kg	7.2,9,10.8,12.9	9.3-18.7	12.2-23	15.8-28	21.6-39.6	25.2-43.2
射料量 (铝)	Injection Weight(Al)	kg	10,12.5,15,18	13-26	17-32	22-39	30-55	35-60
铸造压力 (增压)	Casting Pressure(intensifg.)	MPa	126,102,84,71	140-71	132-71	133-75	130-78	125-75
铸造面积	Casting Area	cm ²	787-1388	885-1735	1200-2220	1400-2630	1900-3200	2360-3920
最大铸造面积 (40MPa)	Max. Casting Area (40MPa)	cm ²	2500	3125	4125	5000	6250	7500
压射位置	Injection Position	mm	-100,-300,	-160,-320	-175,-350	-200,-400	-200,-400	-250,-450
压射头推出距离	Plunger Penetration	mm	300	350	400	450	450	480
压射室法兰直径	Casting Flange Diameter	mm	240	240	260	260	280	280
压射室法兰凸出定板高度	Casting Flange Protrusion	mm	20	25	25	30	30	30
顶出力	Ejector Force	kN	500	550	600	650	750	900
顶出行程	Ejecting Stroke	mm	200	200	250	300	300	300
电机功率	Motor Capacity	kW	45	74	90	110	135	165
系统工作压力	System Working Pressure	MPa	16	16	16	16	16	16
油箱容量	Oil Tank Capacity	L	1500	2000	2500	2800	3000	3200
机器吊装参考重量	Referential Machine Weight For Uplifting	kg	70000	95000	105000	130000	165000	210000
外形尺寸 (长X宽X高)	Machine Dimensions(LXWXH)	mm	10000x3300x3700	11000x4000x4250	12000x4200x4300	12700x4400x4400	15000x4600x4500	16000x4800x4600

■ 说明: 本公司保留对样本中描述产品进行改进的权利, 规格如有变更, 恕不另行通知。样本中的产品照片仅供参考, 产品以实物为准。
 Remark: We reserve the right to make any product improvement or specifications changes without prior notice. And product photos shown in catalogue are for reference only.

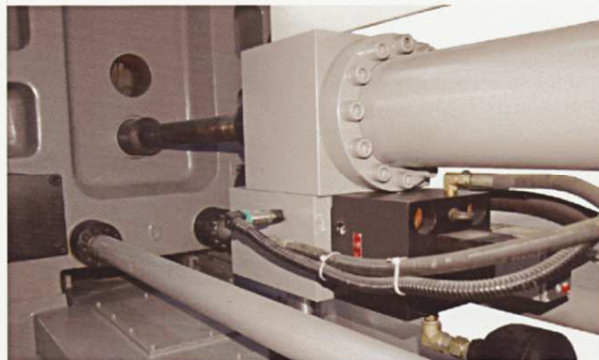
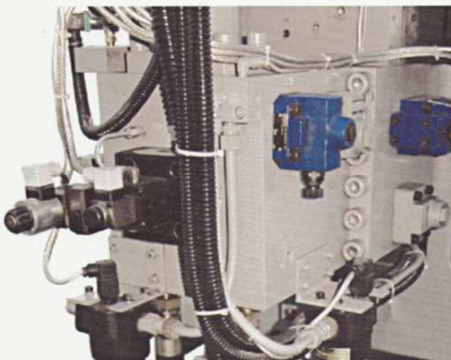
ARC实时控制系列冷室压铸机

ARC Real Time Control Series Cold Chamber Die Casting Machine



伴随着中国经济的全球化，市场上对精密、优质的压铸件的需求日益扩大，按照欧美最先进的水准研发的伊之密实时控制ARC系列压铸机，实现高质量，高稳定性的完美压射工艺，为您生产高精密、高品质的压铸件，提供了坚实的设备保障。

With China's economic globalization, the demand of precise and high quality die casting parts is increasing. Adopted world class technology, Yizumi develops the real time control ARC series with high quality and high reliability injection technology that ensure production of ultra-high producing high precision and high quality die casting parts.



实现世界级水准的完美压射性能

Achieve The World Standard Perfect Injection Performance

伊之密ARC系列
ARC Series Cold Chamber Die Casting Machine

>>> ARC系列优势:

全程闭环控制, 实现高稳定性与高一一致性的压射
多段速度自由设定
匀加速慢压射功能
高速末端刹车功能

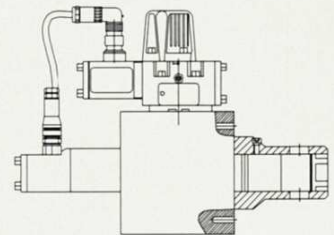
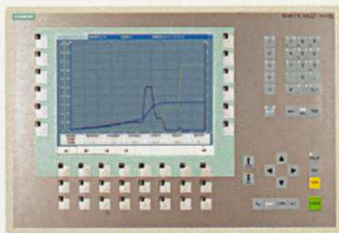
>> ARC给您带来

稳定保持产品重复性品质
自由灵活的工艺选择
先进的无飞边压射技术
有效降低产品气孔率
提高产品表面质量

>> 主要特点

- > 超强的压射性能
 - 最大压射速度 $\geq 8 \text{ m/s} - 10 \text{ m/s}$
 - 可调节范围: $0.05 \text{ m/s} - 8 \text{ m/s}$
 - 增压建压时间 $\leq 10 \text{ ms} - 15 \text{ ms}$
 - 慢速转快速提速时间: $\leq 15 \text{ ms}$
- > 精准的闭环控制技术/
 - 高压射速度8段以上自由设定
 - 实时控制周期 $\leq 1 \text{ ms}$
 - 高测量精度的压射位置、速度、压力, 闭环控制
 - 匀加速功能
 - 高速末端刹车功能

>> 实时控制原理 / Real time control principle



伺服控制系统接收信号指令后, 立即对伺服阀进行控制并根据压射过程中的反馈信息, 监控调整, 同时根据压射位置传感器的数据指令进行操作, 实现伺服压射的全过程, 而且整个控制周期 $\leq 1 \text{ ms}$

Once the servo control system receives the signal, it controls and adjusts the servo valve according to the feedback from the injection process and the signals from the injection position sensor. Thus the servo control for injection process is realized and the whole control cycle is less than 1ms.

ARC Series Features:

Whole process closed loop control;
Multi-stage speed control;
Constant acceleration slow speed injection;
High speed brake function.

ARC Series Advantages:

Improve product repeatability.
Flexible process control setting;
Advanced no flush technology;
Reduce bubbles defect effectively;
Improve surface quality;

Main Performance:

Superior injection performance

Max. injection speed $\geq 8 \text{ m/s} - 10 \text{ m/s}$
Adjustable range: $0.05 \text{ m/s} - 8 \text{ m/s}$
Pressure building time $\leq 10 \text{ ms} - 15 \text{ ms}$
Switching time from slow speed to high speed: $\leq 15 \text{ ms}$

Precise close loop control technology

More than 8 stages flexible control settings
Real time control scan cycle $\leq 1 \text{ ms}$
Precise measurement and real time closed loop control of injection position, speed and pressure
Constant acceleration function
High speed brake function

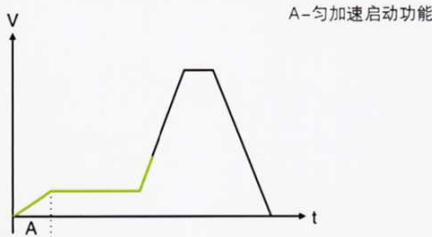
实时控制技术改善产品品质

Real Time Servo Control Improve Product Quality

伊之密ARC系列应用意义

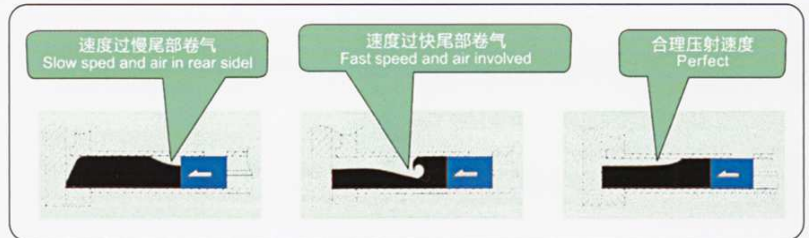
ARC Series Die Casting Machine Application

>> 匀加速慢压射有效防止卷气



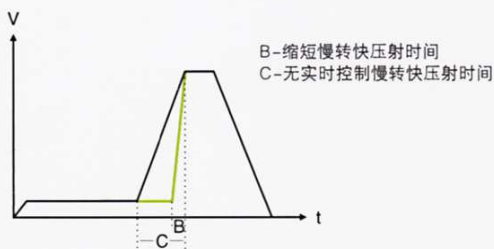
ARC系列慢速段分5段自由设定，灵活方便，满足各种复杂产品的工艺要求；压射启动，慢压射段无压力波动，压射冲头平稳移动，有效避免对金属液的冲击，防止气体包卷。

Even low speed acceleration avoid trapping of air



ARC machine series, with 5-stage control in slow speed injection, complicated production process can be met. Stable injection start with minimum pressure fluctuation during low speed injection ensures stable movement of the plunger, that effectively reduce impact to the melt and avoid trapping of air.

>> 快速响应快速提速实现完美工艺



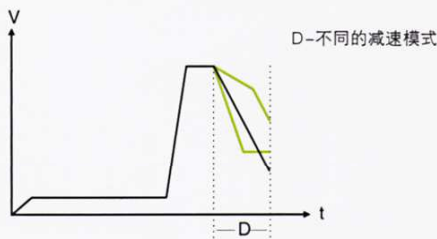
ARC系列B段压射慢速转快速的时间被有效缩短，实时控制系统以大流量、高响应的加速性能来满足此要求；最短的提速时间，更加接近理想的工艺要求，既保障了产品的外观质量，又将产品内部的空气含量降到最低。

High response fast acceleration ensures perfect process control



Thanks for the high response and large flow properties of the real time servo system, the switching time from low to high speed during B phase injection can much be reduced in the ARC series short switching time and fast accelerating makes perfect process control possible that ensures good surface quality and minimize trapping of air and defect of product.

>> 高速末端精准减速缔造无飞边压铸技术



ARC系列实时控制高速刹车功能是在伺服阀在高速状态下，仍可以提供多种减速模式；高速压射状态下，实现合理模式的减压、减速，有效避免产生飞边，减少冲击力，延长模具寿命。

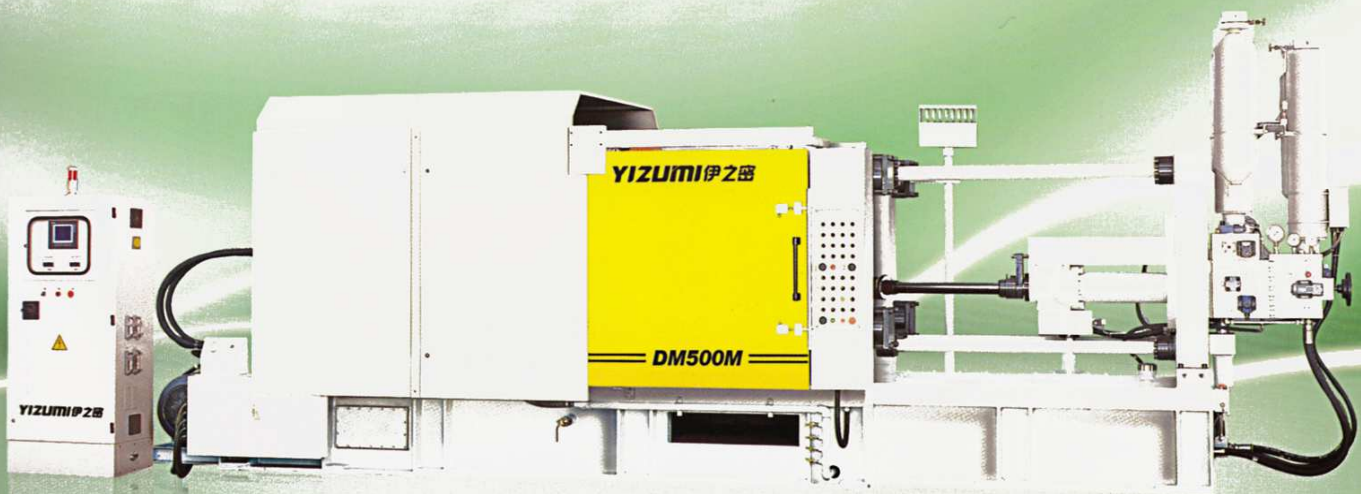
High speed precision deceleration makes flash free die casting possible



Thanks for the high speed brake function of the ARC machine series, pressure and speed of the plunger can be controlled precisely during injection end phase, flash and impact force are much reduced that prolong the service life of the mould.

镁合金系列冷室压铸机

DM Magnesium Alloy Series Cold Chamber Die Casting Machine



镁合金材料以重量轻、抗电磁干扰、抗震性好以及其良好的铸造加工性能，被称为“21世纪的绿色工程材料”，其开发应用受到世界各国的重视，正被广泛应用于汽车、3C、航空、机械、国防等领域。为配合中国镁合金产业化政策，伊之密研发的全系列镁合金压铸机，以杰出的性能和高安全性得到客户信赖。

With the advantages of light weight, anti-EMI (Electro Magnetic Interference), anti-vibration and excellent casting performance, magnesium alloy is recognized as "green engineering materials in the 21st century". People from various countries of the world pay more attention to the application. Magnesium alloy has been widely applied to automotive products, 3C products, aerospace, machine and national defense etc. In order to follow Chinese policy of magnesium alloy industrialization, Yizumi developed magnesium alloy die casting machine. Its outstanding performance and high security already earn customers' trust.

伊之密镁合金系列应用

DM Magnesium Alloy Series Die Casting Machine Application

- >> 航天航空、军事国防、便携工具、3C制品、汽车制品、摩托制品、体育休闲、其他。
Aerospace, military defense, portable tools, 3C products, automotive products, motor products, sports, leisure, and others.



>> 标准版配置 / Standard Features :

高性能：最大空压射速度 $\geq 8\text{m/s}$ ，增压建压时间：DM140-DM900 $\leq 15\text{ms}$ ；DM1000以上 $\leq 20\text{ms}$

全封闭式安全防护钣金设计

有多个压射位置可供选择

西门子PLC控制系统，触摸屏操作，具备生产管理，故障诊断及50组模具参数存储等功能（DM1000以上100组模具存储）。

电比例控制系统压力和流量，具备多级压力和速度控制以及低压合模保护功能

参数表及其他配置，请参照标准机台

High performance: Maximum air shot speed $\geq 8\text{ m/s}$; intensification building time: DM140-DM900 $\leq 15\text{ms}$; DM1000-DM3000 $\leq 20\text{ms}$

Completely enclosed machine safety cover;

Multi-injection Position;

Siemens PLC control system (touch screen) with functions such as production management, trouble diagnosis, and 50 sets mold parameter storage;

Electrical proportional control of system pressure and flow, with multi-stage pressure and speed control, and low-pressure mold clamping protection function;

For specification and other features, please refer to standard machine.

镁合金系列配置

DM Magnesium Alloy Series Die Casting Machine Features

>> 升级版的选配方案 (注: 此项目为客户选配项目) / Upgraded Optional Features :

压射电比例控制, 进口PARKER阀控制精准, 方便调节

超高的性能: 最大空压射速度 $\geq 8\text{m/s}$, 增压建压时间 $\leq 10\sim 15\text{ms}$, 配备嵌入式实时控制系统, 具备自由多段的速度设定功能、匀加速慢压射功能、高速末端刹车功能, 适用于精密复杂超薄的高端产品

智能在线品管PPS技术, 有效监控和稳定产品品质

Electrical proportional control of injection system, Parker valve with accurate control and convenient adjustment;

Super high performance: Maximum air injection speed $\geq 8\text{m/s}$; Pressure building time $\leq 10\sim 15\text{ms}$. Equipped with real-time control system; Multi-stage speed control; Constant acceleration slow speed injection; High speed brake function; Suitable for precise, complex and ultra-thin high-end product

Intelligent online PPS quality control and display technology that control product quality efficiently.

>> 完善的工艺周边配套方案 / Complete solution for auxiliary equipments:

镁锭的选型、存储、预热系统供应方案

专业高效熔化、保温、定量给汤的气体保护炉系统供应方案

镁合金产品打磨防爆、后续加工系统供应方案

产品表面处理配套供应方案

Magnesium ingots selection and storage and preheating system.

Furnace for the melting, heat preservation and rationing of magnesium alloy.

Polishing, explosion prevention and subsequent processing system of magnesium alloy product.

Auxiliary equipments for product surface treatment.

>> 全套规范化技术指导与跟踪 / Complete and professional technical support:

镁合金熔化与安全操作规范指导

镁合金压铸生产的安全作业规范

镁合金表面处理的后续加工安全操作规范

镁合金表面处理的技术指导

镁合金回收与精炼处理的工艺指导

Guidance for safe operation of magnesium alloy melting .

Guidance for magnesium alloy die casting safe production.

Guidance for safe operation of product surface treatment subsequent processing.

Technical advice for product surface treatment.

Technological advice for recycling and refining of Magnesium alloy.

其他配套周边设备

Other Auxiliary Devices

伊之密倡导自动化高效率概念，主机标配有与各种周边设备的接口和软件程序，亦可以为客户提供全系列的配套方案，交付给您完善的压铸单元！

>> 单臂式给汤机

汤量稳定精准；
手臂速度可高低速切换；
注汤位置准确，停止精度高；
独立变频器控制，操作简单；
PLC控制，故障码显示，维修方便；

Single-arm Type Auto Ladle

Ensures a stable and precise volume of liquid.
The moving speed of the mechanical arm can switch between high and low speed;
Highly precise pouring position
Independent transducer, facilitate the operation
PLC control, failure codes LED display, easy to maintain.



>> 五连杆式给汤机

五连杆机构，双包络涡轮蜗杆传动，平稳度高；
整机精度高；
可随时平稳刹车；
独立变频器控制，操作简单；
PLC控制，故障码显示，维修方便；

Five-point-linkage Type Auto Ladle

With five-point-linkage structure, that ensure, high stability;
High precision
The ladling arm can brake smoothly when it is moving at high speed.
Independent transducer, facilitate the operation
PLC control, failure codes LED display, easy to maintain.



>> 直立旋转式喷雾机

结构简单，耐用；
雾化效果好，尤其用于薄壁件；
可单独调整参数；
防落保护功能；
PLC控制回路，故障码显示，容易维修

Vertical Type Auto Sprayer

Simple and durable structure;
Outstanding atomizing effect, especially for thin parts
Can be adjusted independently
Falling down avoidance device when there is no pressure
PLC control, failure codes LED display, easy to maintain.



>> 四连杆式喷雾机

结构简单，耐用；
雾化效果好，尤其用于薄壁件；
可单独调整参数；
防落保护功能；
PLC控制回路，故障码显示，容易维修；
主要用于1000吨以上的机型。

Four-point-linkage Type Auto Sprayer

Simple and durable structure;
Outstanding atomizing effect, especially for thin parts
Can be adjusted independently
Falling down avoidance device when there is no pressure
PLC control, failure codes LED display, easy to maintain
Mainly used for the machine beyond 1000 ton.



>> 油压切边机

独特的高低速液压系统，高速下降，低速保压时间可调；充分的安全保障系统。

Hydraulic Trimming Machine

Special hydraulic system with high and low speed, fast speed descending, low speed pressure holding time can be adjusted; High security.



>> 自动取件机

多种取出选择模式；
PLC控制回路，故障码显示，容易维修；
进口气压元件；

Auto Extractor

It has the function of waiting for arm advancing, which can speed up the extraction and production; It comprises a front clamp and a rear one, facilitating the extracting operation. PLC control loop is employed with fault code display function to facilitate maintenance.



>> 模温机

独特的热交换模块设计，标准加热、冷却单元以组件管筒形式换入。独有的管筒中心加热微电脑控制，系统控温精确($\pm 5^{\circ}\text{C}$) 减少模具表面温度波动，延长压铸模具使用寿命，适合生产薄壁、表面不允许有冷纹的铸件。

Mould Temperature Controller

Unique heat exchange module design;

Precise temperature control ($\pm 5^{\circ}\text{C}$);

Reduce the temperature changes of mould surface, to prolong the service life of mould. Suitable for producing the thin-walled casting parts and the casting parts without cold mark!



>> 离型剂混合压送机

稀释倍率可根据客户产品需求从40至200倍间随意调整，操作简单方便，一台机可支持多台压铸机同时生产使用，性价比高，自动化连续生产输送，稀释倍数精准，液面检测精准，无沉淀，洁净性好。

Release Agent Mixer

Dilution ratio can be adjusted from 40 times to 200 times, easy and convenient to operate; One set of mixer can work with several sets of die casting machine, Production and conveyance are automated. The dilution ratio and examinations on liquid level are fairly precise. It will not create sedimentation, guaranteeing the purity of products.



其他配套周边设备

Other Auxiliary Devices

伊之密倡导自动化高效率概念，主机标配有与各种周边设备的接口和软件程序，亦可以为客户提供全系列的配套方案，交付给您完善的压铸单元！

>> 喷雾机器人

铝合金本体，重量轻，转动惯量小，加速度快；window界面，基于pc技术，友好的人机界面，编程，操作方便；7万小时的平均无故障率，极高的可靠性。

Spraying Robot

Aluminum alloy with light weight, small moment of Inertia, fast acceleration;
Friendly interface, easy operation;
High reliability.

>> 取件镶件机器人

功率大——适用范围广
坚固耐用——适合恶劣生产环境
通用性——柔性化集成和生产
可靠性强——正常运行时间长
速度快——操作周期时间短
精度高——零件生产质量稳定

Extracting Robot

High power--- wide application scope
High durability---suitable for poor production environment
University---flexible integration and production
High reliability---long normal operation time
Fast speed---short operation time
High precision---stable quality of parts

>> 自动传送带

根据输送工艺要求，可以单台输送，也可多台组成或与其他输送设备组成水平或倾斜的输送系统，以满足不同布置形式的作业线需要，可以加装冷却、称重等装置，满足工艺要求。

Auto Conveyer

Can use independently or work with other equipments to satisfy different production requirements. Can add cooler, weighing device and other devices.

>> 镁铝压铸件切边机

采用四柱三板式结构，活动板与工作面平行精度高，工作台面配有落料槽及吹气装置，提高生产效率，压力、行程、速度、保压时间、闭合高度均可按需求调整，方便操作。

Magnesium and Aluminum Casting Parts Trimming Machine

Adopts four-column and three-plate structure, the active plate is paralleling with the working surface in high precision;
Working platform was set with the charging conduit and blowing device to improve productivity;
Pressure, position, speed and pressure holding time and shut height can be adjusted.



>> 真空机

与压铸机联动同步动作, 开模吹气, 合模抽真空。不会倒吸铝料, 真空侦测, 空压侦测均使用压力传感器 (LED), 检测准确, 真空吸引力低于设定值时, 红灯亮。

Vacuum Machine

Work synchronously with die casting machines as follows: blowing air during die open and vaccumizing during die close without sucking liquid aluminum;
Precise pressure sensor is employed to test pressure;
When vacuum attraction is lower than the set value, the red light will be on.

>> 锤头润滑颗粒机

铸件表面没有油痕, 使铸件清洁光亮, 无油渍污染, 改善生产环境, 保证了车间里清洁干净。可减少颗粒用量, 节省成本。

Plunger Lubrication Machine

No oil remains on the surface of casting parts, which make the casting parts clean.
No oil pollution, which improves production environment;
Reduce the amount of granule to lower the cost.

>> 坩埚熔炉

配合压铸机各种尺寸、容量, 可以使用天然气、煤气、柴油及电力熔化, 效率高, 节省能源, 温度控制精度高。

Crucible Melting Furnace

Work with various models of die casting machine;
Can choose natural gas, liquified petroleum gas, diesel oil and electricity;
High melting efficiency, energy-saving, precise temperature control.

>> 镁合金熔化定量炉

集熔化、保温、定量多项功能于一体, 双腔不锈钢坩埚设计, 熔化、保温区独立加热、控制, 保护气氛下工作, 合金液质量优良, 熔炉工作时安全、可靠。

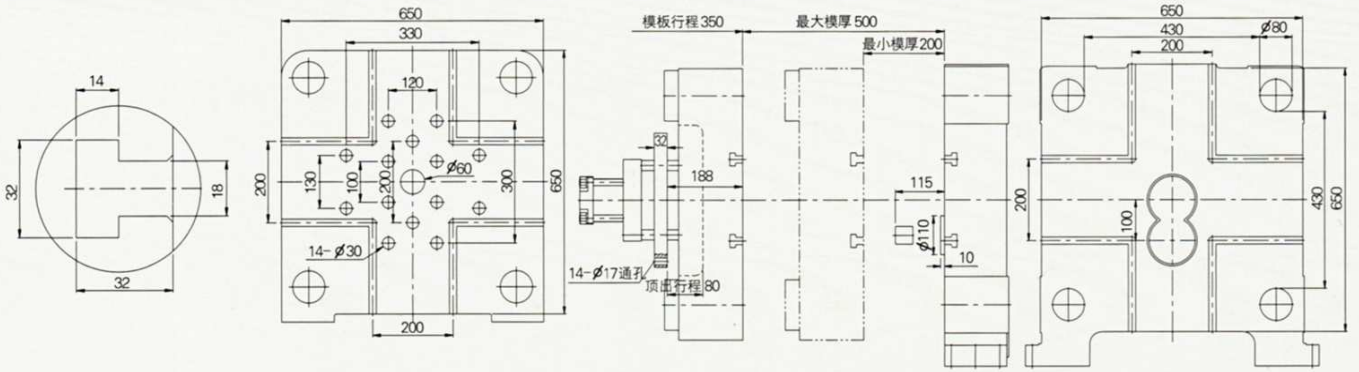
Magnesium Alloy Melting Furnace

With functions of melting, holding and fixing quantity;
Two cavities of stainless steel crucible, melting and holding area can be heated up and controlled independently;
High quality alloy liquid;
High security and high reliability.

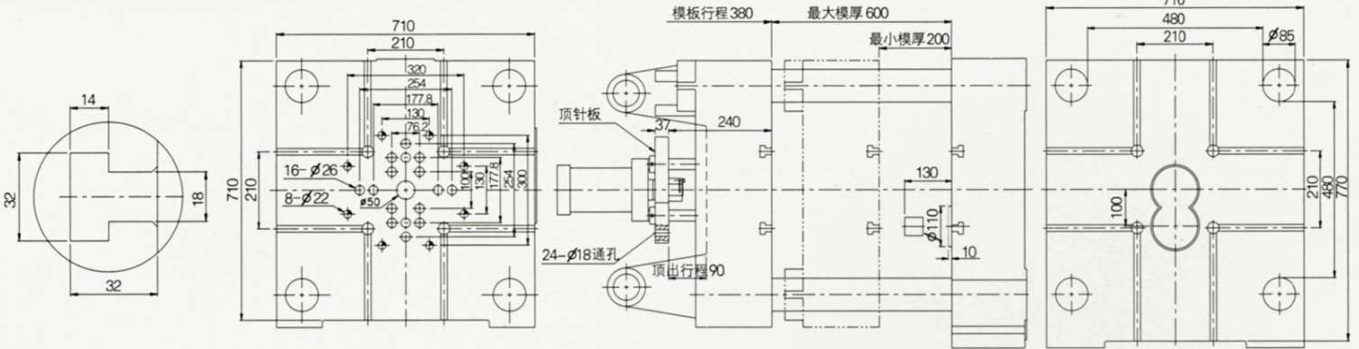
模板图 DM140-DM900

PLATEN LAYOUT DM140-DM900

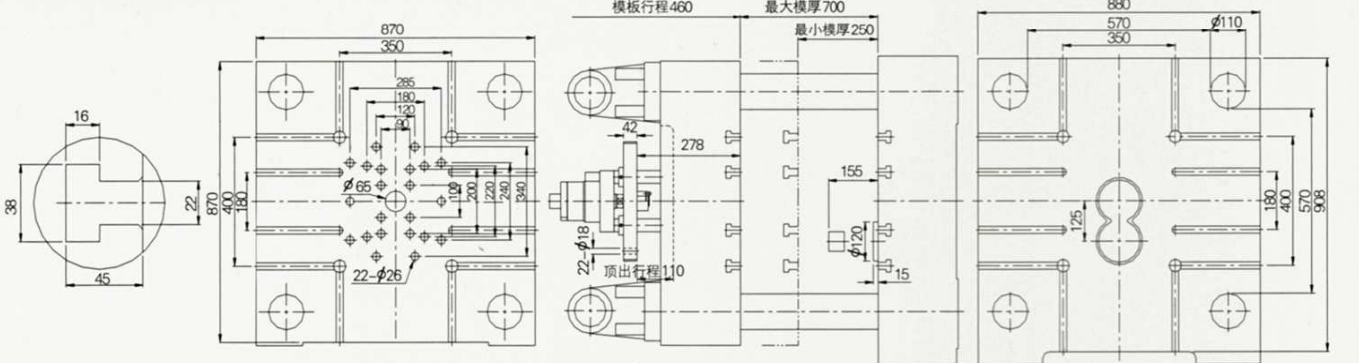
DM140



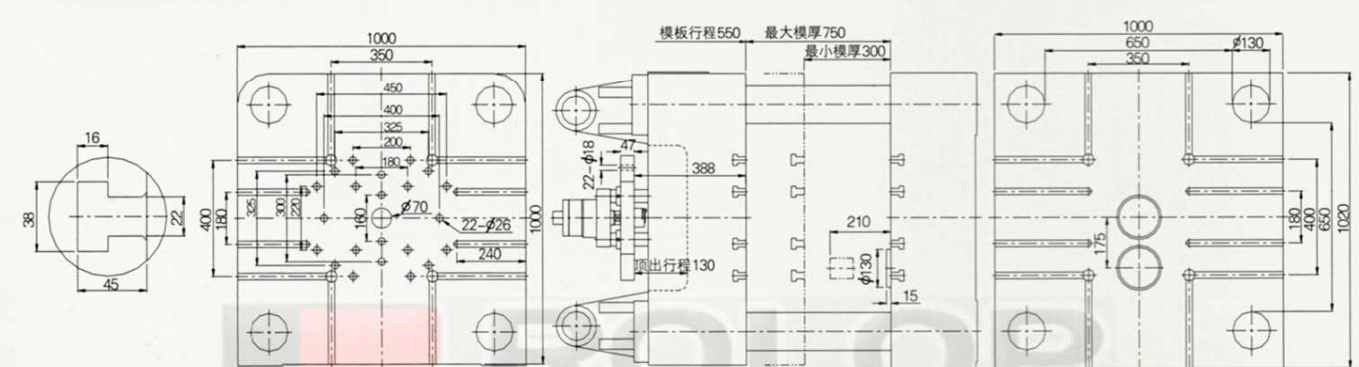
DM180



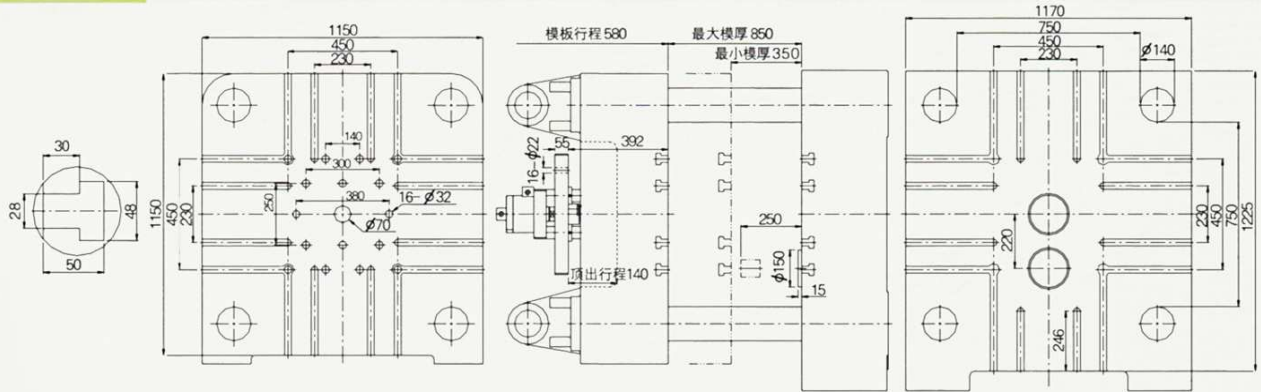
DM300



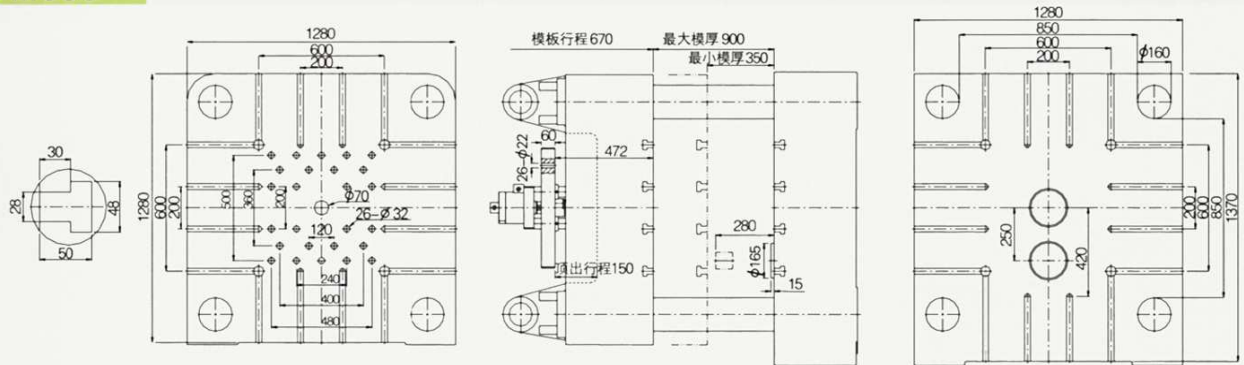
DM400



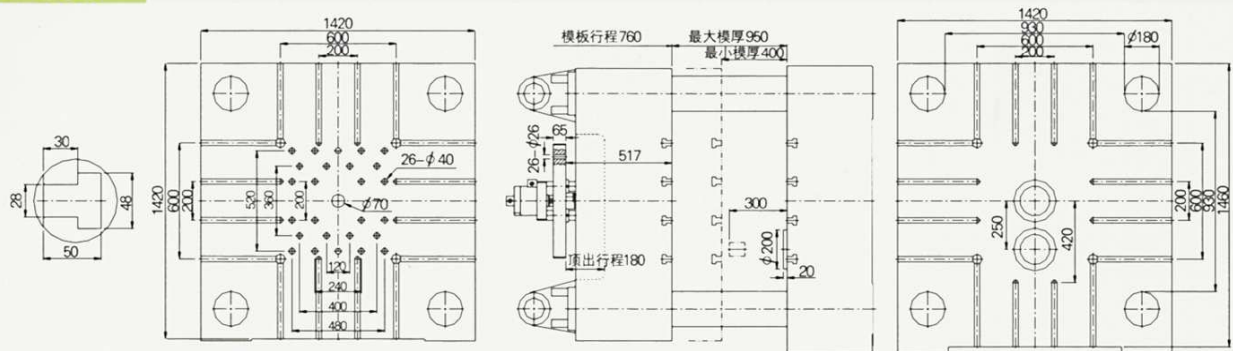
DM500



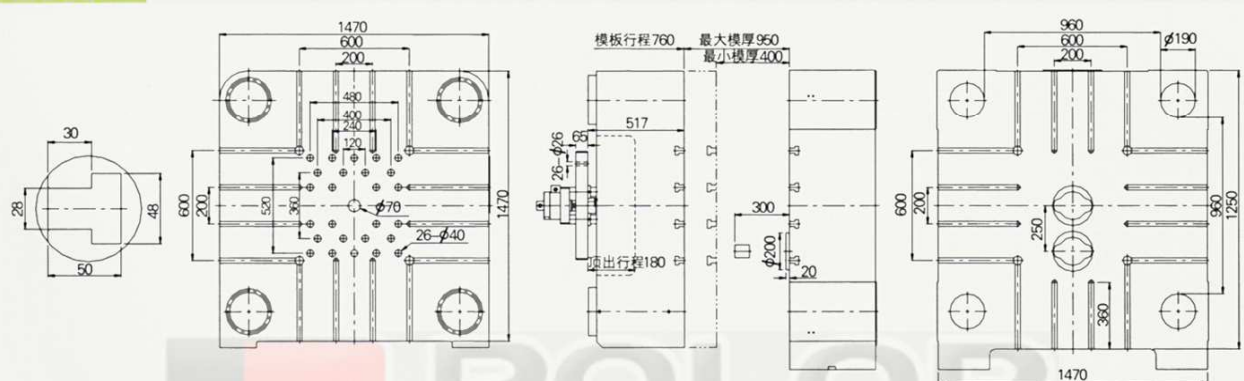
DM650



DM800



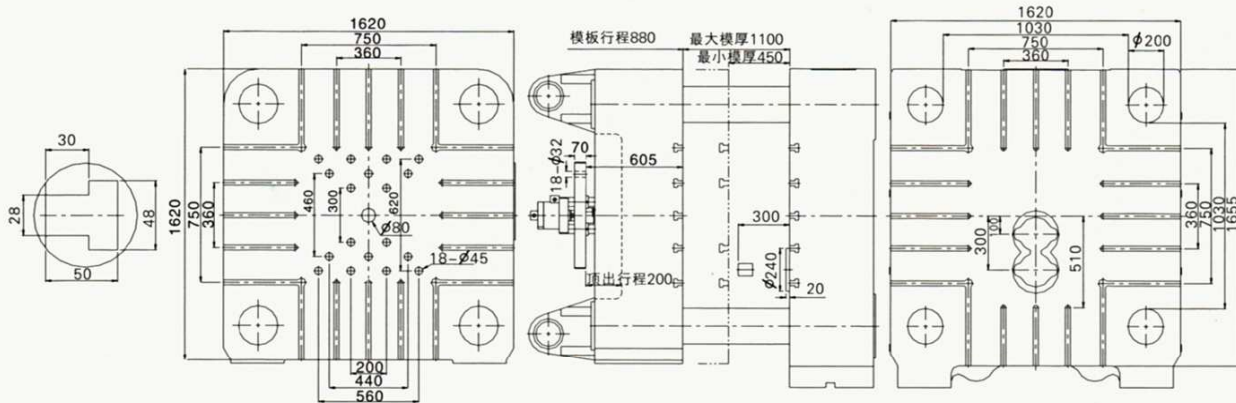
DM900



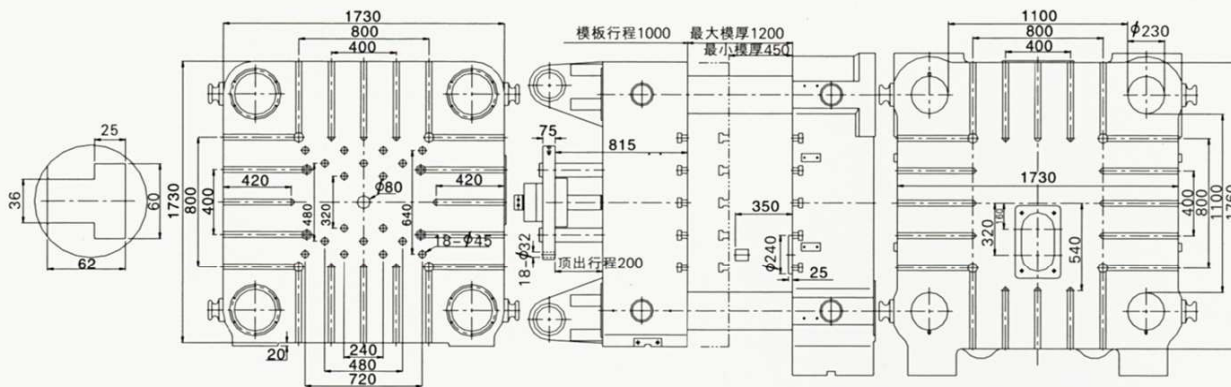
模板图 DM1000-DM3000

PLATEN LAYOUT DM1000-DM3000

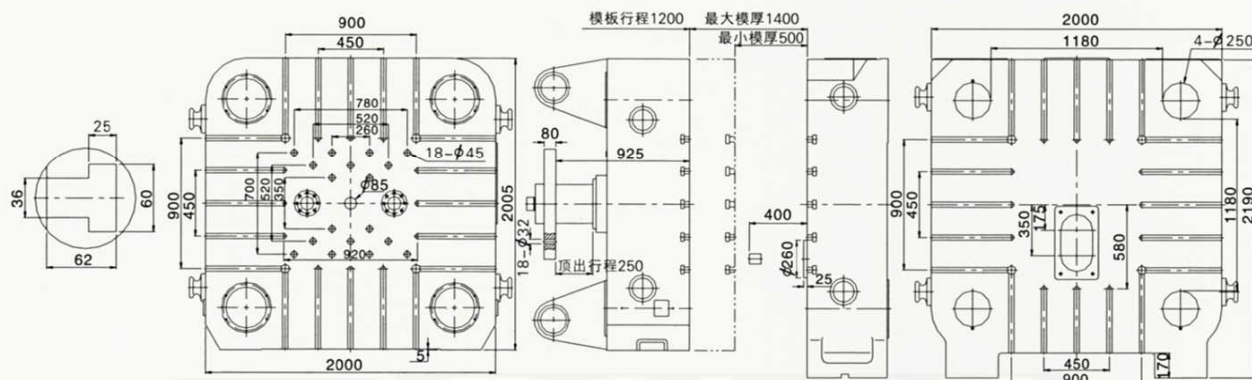
DM1000



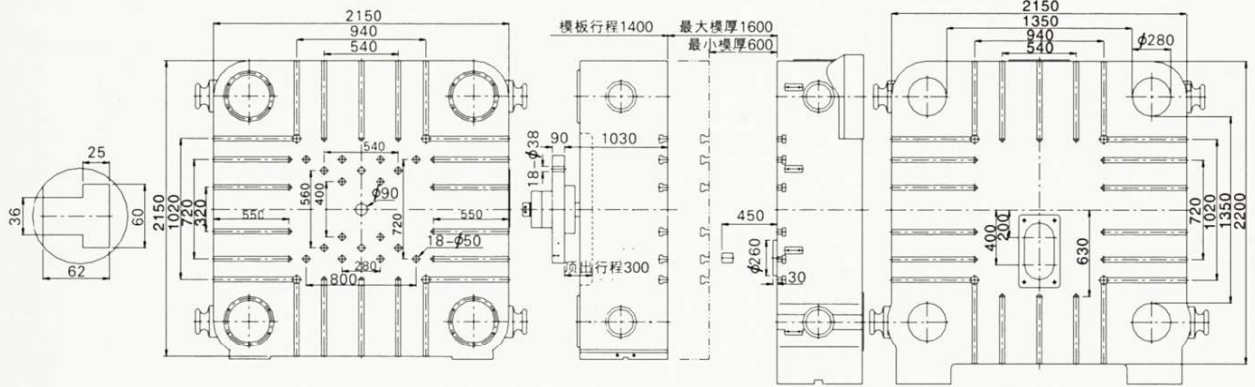
DM1250



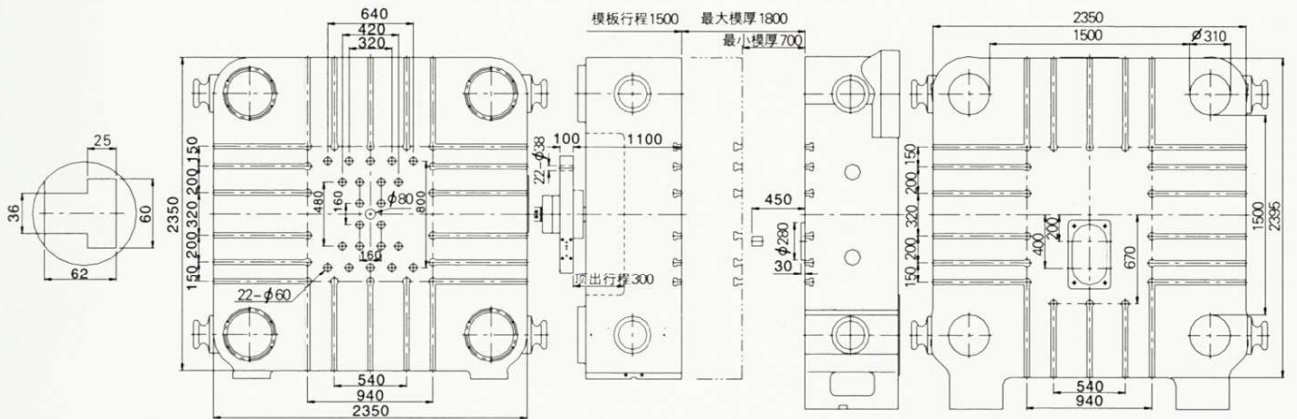
DM1650



DM2000



DM2500



DM3000

